

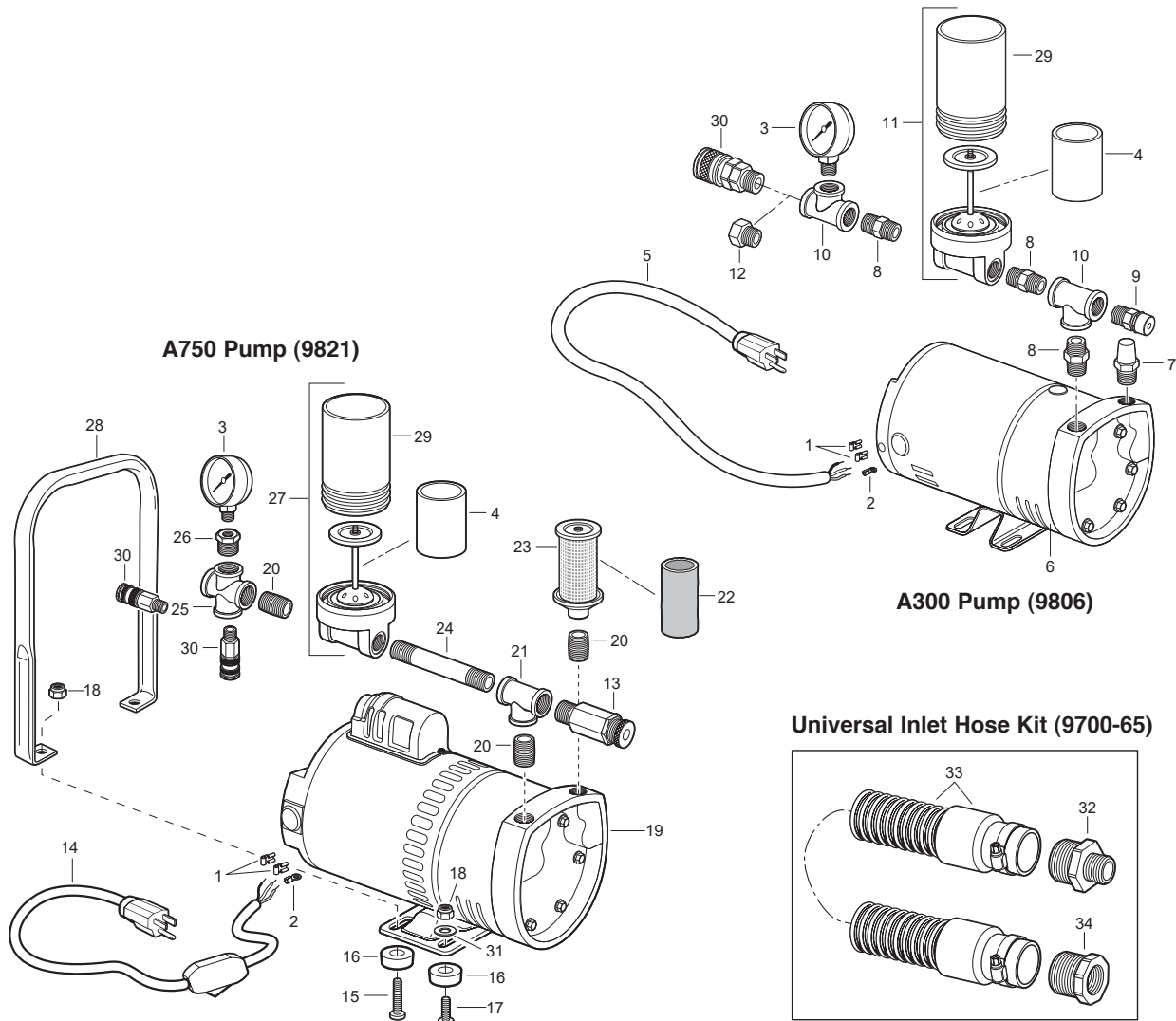


PRODUCT:

BREATHING AIR PUMPS (1-2 WORKERS)

PART NUMBER:

**9806 (A-300)
9821 (A-750)**



| KEY | PART # | DESCRIPTION | KEY | PART # | DESCRIPTION | KEY | PART # | DESCRIPTION |
|-----|-------------|--------------------------------------|-----|----------|--------------------------------------|----------|----------|---|
| | 9806 | A-300 Pump | 15 | 9800-68 | Machine Screw | | | Universal Inlet Hose Kit |
| | 9821 | A-750 Pump | 16 | 9700-06 | Rubber Feet (each) | 32 | 9700-60B | Reducer Nipple |
| | 9822 | A-750TE (DISCONTINUED) | 17 | 9800-69 | Machine Screw | 33 | 9700-66 | Universal Inlet Hose (50 Feet) w/ Cuff |
| 1 | 9800-75 | Flag Connector | 18 | 9800-64 | Nylon Lock Nut | 34 | 9700-60A | Bushing |
| 2 | 9800-76 | Ground Connector | 19 | 9821-AA | Pump & Motor Assembly (3/4 hp Motor) | | 9700-60C | Bushing for 9846-27 (Not Shown) |
| 3 | 9700-04 | Pressure Gauge | 20 | 9000-05 | Close Nipple Tube | | 9000-27 | Adapter for 9806 (Not Shown) |
| 4 | 9700-02 | Exhaust Filter Element | 21 | 9000-04 | Brass Tee | | | Available for All Models |
| 5 | 9512-02A | Cord | 22 | 9700-01 | Inlet Filter Element | 9700-11 | 9700-11 | Pump Flushing Liquid (Not Shown) |
| 6 | 9806AA | Pump & Motor Assembly (1/4 hp Motor) | 23 | 9700-08 | Inlet Filter Assembly (w/ Filter) | 9700-65 | 9700-65 | Universal Inlet Hose Kit (Complete) |
| 7 | 9700-07 | Inlet Filter | 24 | 9000-06 | Nipple Tube | | | Model A-300 Service Kit (Not Shown) |
| 8 | 9000-25 | Hex Nipple | 25 | 9000-09 | Galvanized Cross | 9700-40 | 9700-40 | Service Kit (Includes Vanes (Set of 4), Filters, and Flushing Liquid) |
| 9 | 9700-79 | Pressure Relief Valve | 26 | 9000-07 | Chrome Hex Bushing | 9700-41S | 9700-41S | Vanes (Set of 4) |
| 10 | 9000-26 | Brass Tee | 27 | 9700-09 | Exhaust Filter Assembly (w/ Filter) | | | Model A-750, A-750TE Service Kit (Not Shown) |
| 11 | 9700-10 | Exhaust Filter Assembly (w/ Filter) | 28 | 9700-05 | Carry Handle | 9700-50 | 9700-50 | Service Kit (Includes Vanes (Set of 4), Filters, and Flushing Liquid) |
| 12 | 9000-27 | Reducer (Optional) | 29 | 9700-15C | Exhaust Filter Canister | 9700-51S | 9700-51S | Vanes (Set of 4) |
| 13 | 9700-03 | Pressure Relief Valve | 30 | | Coupler (See Page 49) | | | |
| 14 | 9512-02 | Cord w/ Switch | 31 | 9800-62 | Flat Washer | | | |