

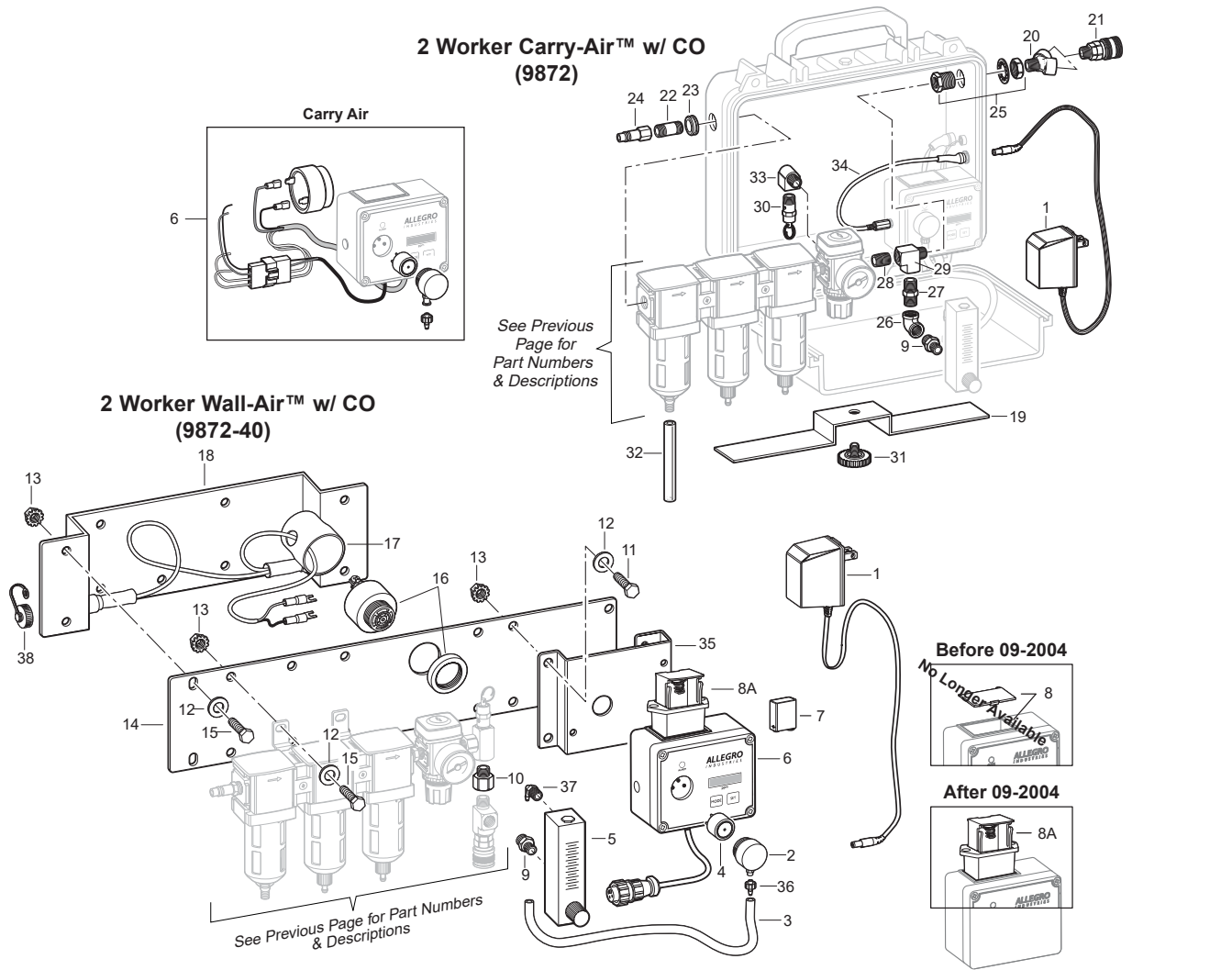


PRODUCT:

**BREATHING AIR FILTRATION PANELS  
(2 WORKERS)**

PART NUMBER:

**9872 (CARRY-AIR™ W/ CO MONITOR)  
9872-40 (WALL-AIR™ W/ CO MONITOR)**



KEY	PART #	DESCRIPTION	KEY	PART #	DESCRIPTION	KEY	PART #	DESCRIPTION
	9872	2 Worker Carry-Air™ w/ CO	10	9875-25	Adapter	28	9872-29	Close Nipple
	9872-40	2 Worker Wall-Air™ w/ CO	11	9800-74	Tap Bolt	29	9872-27	Street Elbow
1	9872-95	AC to DC Power Supply	12	9800-62	Flat Washer	30	9875-09	Relief Valve
2	9872-92	CO Sensor Cover	13	9500-67	K-Nut	31	9872-30A	Support Stand Retainer Screw
3	9872-14	Poly Flow Tubing	14	9865-06C	Filter Panel Plate	32	9872-13	Poly Flow Tubing
4	9872-69	CO Sensor (Purchased after 7/98)	15	9500-79	Tap Bolt	33	9872-18	Adapter
5	9872-25	Flow Meter	16	9871-01D	Piezo Alarm	34	9872-88	DC Cable Extension
6	9872-02B	CO Monitor for Wall-Air™ (Includes 1, 2, 4, 6-8)	17	9871-01N	Alarm Cover	35	9865-17	Monitor Bracket (Wall-Air™)
	9872-02BC	CO Monitor for Carry-Air™ (Includes 1, 2, 4, 6-8)	18	9865-05C	Panel Mount Bracket Assembly	36	9872-14B	Male Luer
7	9871-01F	Battery	19	9872-30	Support Stand	37	9872-17	Elbow
8	9872-91	Battery Compartment Cover (not sold separately) <b>NO LONGER AVAIL.</b>	20	9872-10	Y-Connector	38	9872-85	Receptacle Cap
	9872-91A	Battery Compartment (Purchased before 09-2004) <b>NO LONGER AVAIL.</b>	21		Coupler (See Page 49)	<b>Parts and Accessories</b>		
8a	9872-91B	Battery Compartment (Purchased after 09-2004)	22	9872-20	Nipple	9872-60	CO Monitor Calibration Kit (Includes 2 Gases: 1 Regulator, 1 Tubing)	
9	9872-28	Adapter	23	9872-12	Grommet	9872-61	Calibration Span Gas, 17 Liter Bottle	
			24	8400-04	Plug	9872-62	Calibration Zero Gas, 17 Liter Bottle	
			25	9872-11	Bulkhead			
			26	9872-26	Union Elbow, Female			
			27	9000-25	Hex Nipple			