



SPECIFICATIONS

Product Description:
Part Number:
Style:

BLOWER
9518-03S, 9518-03, 9518-06, 9518-08, 9518-10
METAL VENTURI

GENERAL DESCRIPTION:

The Venturi Blowers are a perfect solution to moving air in refineries, utility and power plants, shipyards, paper and pulp plants, the marine and steel industry and manhole operations. Anywhere where fumes may be poisonous, explosive or hazardous from process towers, tanks, large pipes or confined space need to be removed. You can cool workers in elevated temperature conditions, or heavy equipment. Our line of high-performance, lightweight Venturi Blowers help to create a safe, healthy working environment leading to greater efficiency and productivity. Welding fumes, hot air, gases and smoke can all be removed quickly and easily.



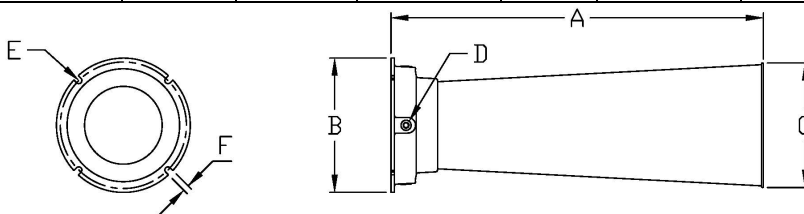
CONSTRUCTION:

- Lightweight Galvanized steel
- Static ground connection attached to the inlet housing (for use in hazardous locations)
- Cast aluminum base
- Steel Handle
- 1 to 1 ½" hose with "crows foot" connection recommended
- Does not require protective grills
- Noise level: 82.5 dB

DUCT CONSTRUCTION: (Optional)

- Single-ply PVC coated vinyl and polyester materials
- Temperature resistant up to 180° F
- Retractable, non-collapsible design
- Class 1 hard drawn spring steel wire helix
- Meets ASTM 227
- Yellow color with black weather strip

Blower Dimensions							Air Flow						
Part No	Overall Length (A)	Base Diameter (B)	Diameter Top of Horn (C)	Thread (NPT) (D)	Bolt Circle Diameter (E)	Basic Slot Diameter (F)	Net Weight (lb.)	AIR CONSUMED (SCFM)			TOTAL AIR FLOW (CFM)		
								60 PSIG	80 PSIG	100 PSIG	60 PSIG	80 PSIG	100 PSIG
9518-03S	16.75"	7.31"	6.00"	1/2"	6.56"	0.4" *	5.5	30	40	50	865	1080	1205
9518-03	30.50"	7.31"	7.00"	1/2"	6.56"	0.4" *	8.5	30	40	50	1135	1310	1465
9518-06	44.25"	11.25"	12.50"	1"	10.50"	0.4" *	22.3	60	80	100	2560	3020	3700
9518-08	46.06"	14.37"	14.25"	1"	13.62"	0.5" *	36.0	110	140	180	4215	4810	5435
9518-10	48.00"	17.50"	15.75"	1"	15.50"	0.6" **	42.0	190	250	380	6180	7305	8220



Free Air Induction Rates			
Part No	60 PSIG	80 PSIG	100 PSIG
9518-03S	28.83	27.00	24.10
9518-03	37.83	32.75	29.30
9518-06	42.67	37.75	37.00
9518-08	38.32	34.36	30.19
9518-10	32.53	29.22	21.63

* 3 MOUNTING SLOTS
** 4 MOUNTING SLOTS